

HOW TO TAKE A SCAN FOR REMOVABLE APPLIANCES

Race Dental accepts scans and manufacture the following removable appliances: Full & Partial Acrylic Dentures, Flexible Dentures, Valplast, Splints, Chrome, Mouthguards, Orthodontics, and Clear Aligners

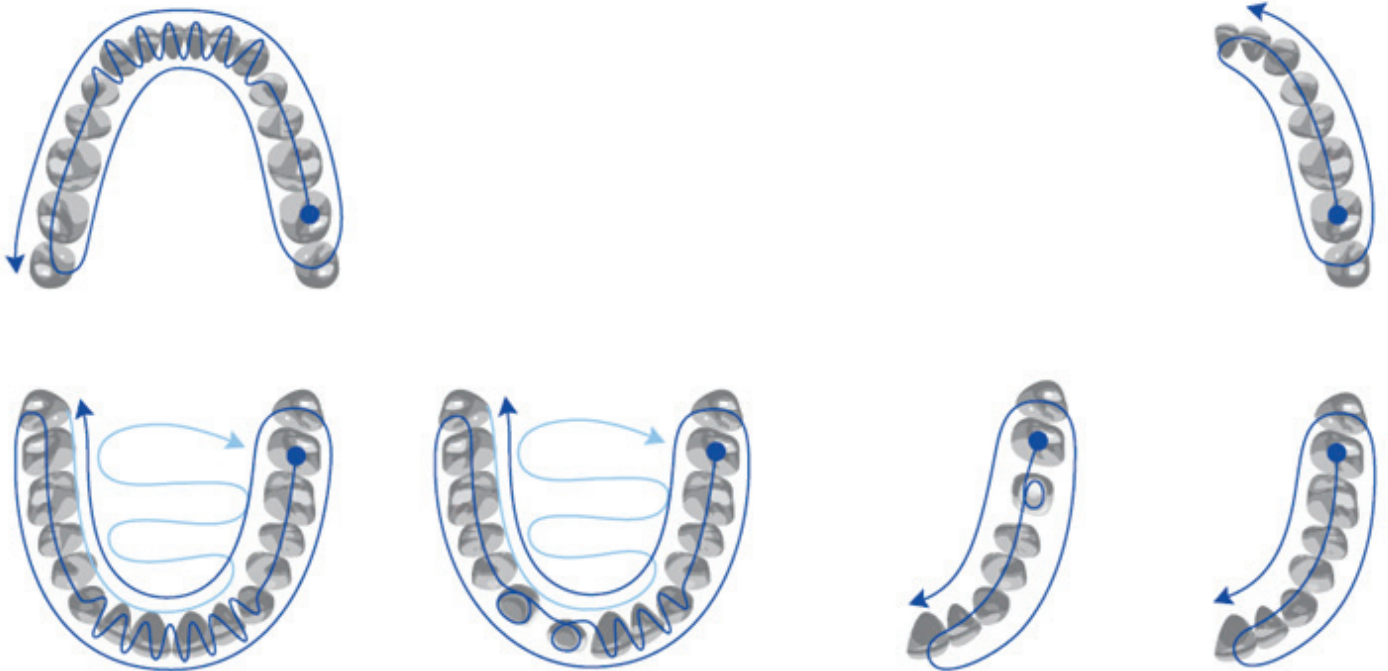
For a dental appliance to be effective, the impression must accurately capture the dental measurements of a patient's mouth.



Digital Impressions provide highly accurate dental measurements in the form of secure, compact digital information files. These digital files can then be quickly transmitted to suitably-equipped laboratories like Race Dental, which can utilise them to design and fabricate prescription appliances much faster, easier, better, and cheaper than ever before.

To ensure a good scan, follow the scan strategy as indicated below.

Ideal Scan Strategy



Below is a list of checkpoints to ensure that your intraoral scan yields a perfect-fitting removal appliance.

1 Ensure that the scan data is complete

- a. Full palatal area
- b. Gingiva area (minimum of 5mm from CEJ)
- c. No holes

2 Check the scan in monochrome

After scanning, clinician needs to check the scan in monochrome. This will allow easier detection of any abnormalities in the scan such as Merging Errors and Overlapping Scans.

Merging errors

Merging errors occur when a clinician scans the same area twice and the merging of images has created abnormal sharp edges. In the presence of abnormal sharp edges, clinician needs to re-scan.

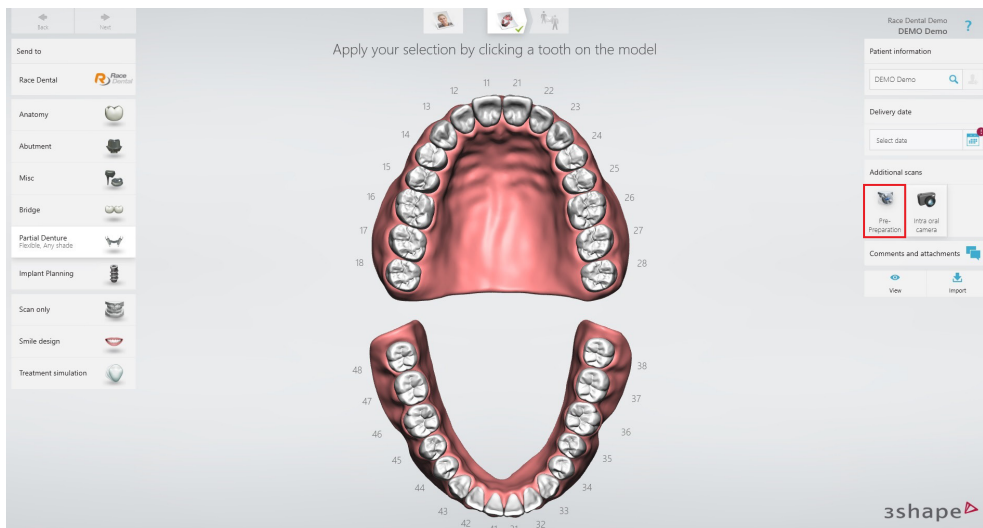
Overlapping scan

Scanning the same area twice could generate separate misaligned files. This is more easily seen in monochrome. If this happens, clinician needs to re-scan.

3 Pre-op of scan of the denture (Valplast and Partial Denture)

If patient has an existing denture and prefers to follow the existing denture, clinician needs to take another scan with the denture inside the patient's mouth. This will be used as a reference when manufacturing the acrylic work.

If Clinician is using a **Trios Scanner**, select **Pre-Preparation** under **Additional Scans**



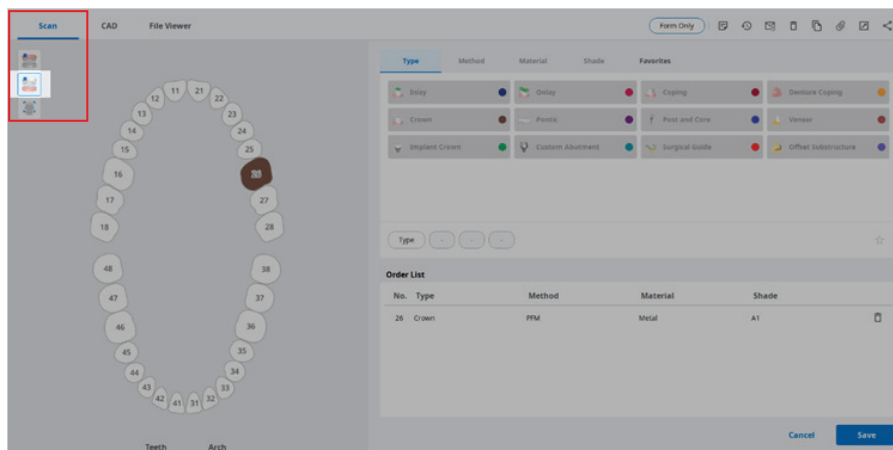
If Clinician is using a **Medit Scanner**, clinician needs to select which arch the **Pre-operative scan** is for.

Pre-operation mandible

You can acquire scan data from the preoperative mandible using the **Pre-operation model** option.

Enable the **Pre-operation mandible** option in **Medit Link > Case Box**.

Launch iScan to start scan.

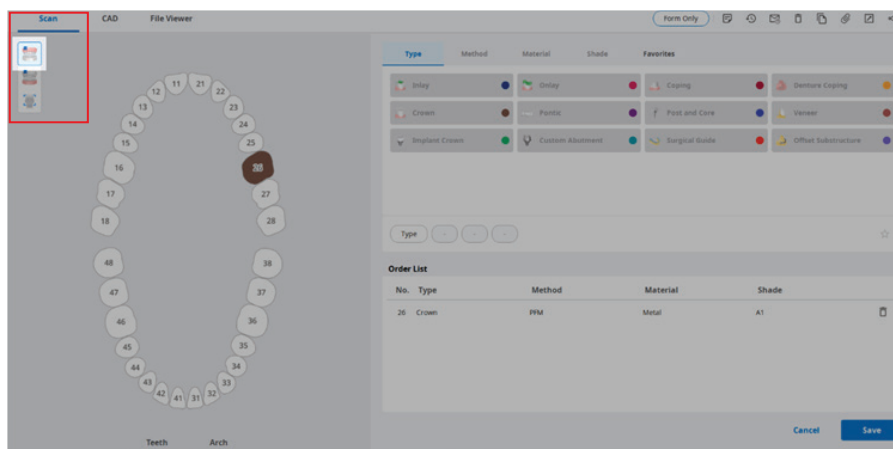


Pre-operation maxilla

You can acquire scan data from the preoperative maxilla through the **Pre-operation model** option.

Enable the **Pre-operation model** option in **Medit Link > Case Box**.

Launch Medit Scan for Clinics (formerly iScan) to start scan.

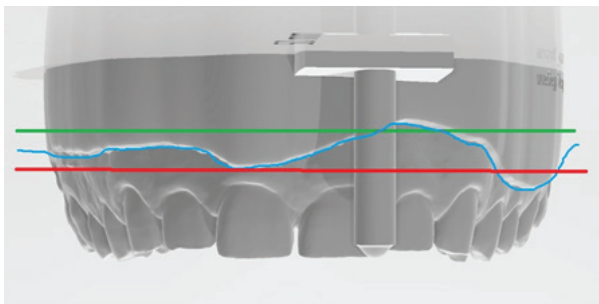


HOW TO TAKE A SCAN FOR MOUTHGUARD

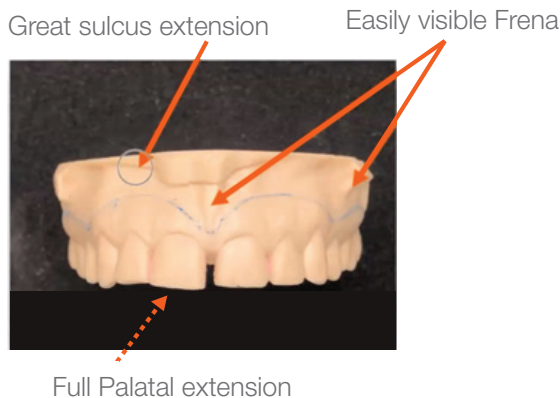
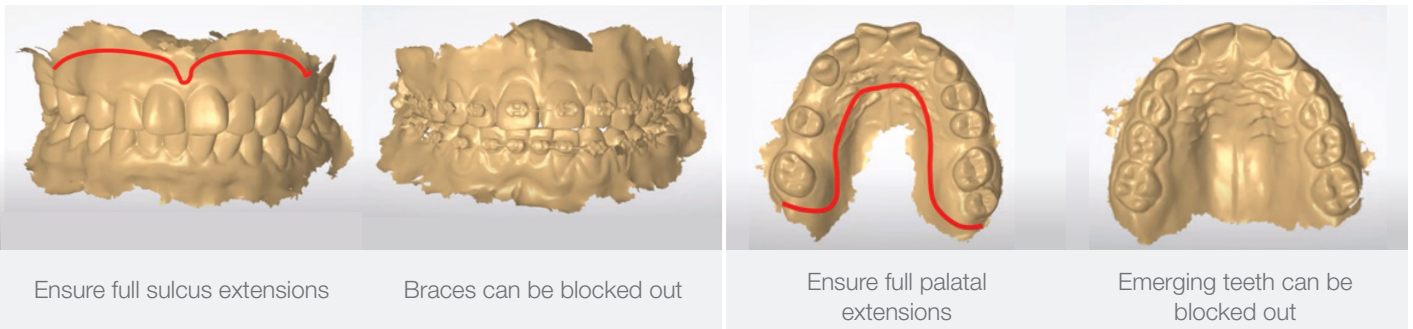


When scanning patients for a mouthguard, follow instructed scan path to scan patient's teeth, then scan more of the labial sulcus and palata area. We require more information in the areas above the teeth for better retention of the mouth guards

If insufficient sulcus and palate is scanned, it may result in rejection of your scan / or ill-fitting mouthguards.



— Recommended height requirement
— End of scan data

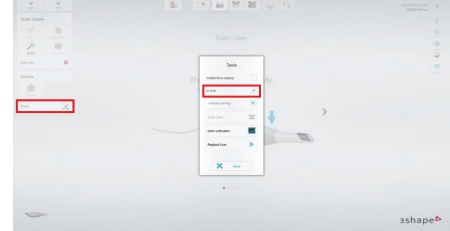


For cases that have missing teeth, turn **AI scan off for Trios** or **No Soft Tissue Filter for Medit** to capture tissue bone areas.

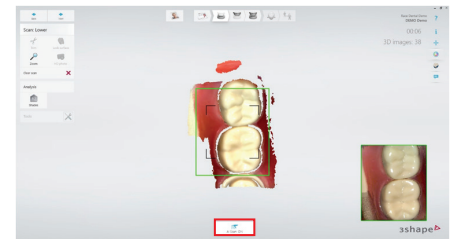
Trios Scanner

There are two ways to turn the AI scan off

- 1 When in the scan page, there is a tool on the left. Untick AI scan




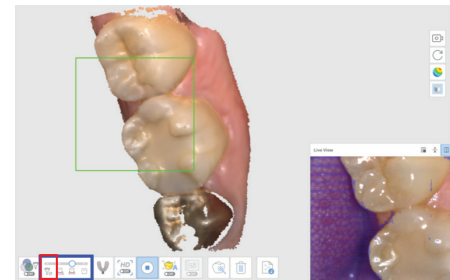
- 2 While scanning, the AI scan will appear at the bottom to turn off.



Medit Scanner

Smart scan filtering removes unnecessary soft tissues depending on the selected filter.

To turn off soft tissue filtering, please select  found at the bottom of your scan window.



No Filtering

- Soft tissue remains intact. This option is useful when scanning an edentulous case, dental model, or stone model.

Teeth + Gingiva

- Soft tissues that interfere with the scan are removed, leaving only the necessary gingiva. You can use this option for most of the general scan cases.

Intense Teeth + Gingiva

- Scan data is acquired only from the gingiva within a certain distance from the tooth.
- By scanning only the area acquired for patient consultation, unnecessary soft tissue trimming is reduced.

Teeth

- All other data except for teeth is removed, leaving the least amount of gingiva. This option is effective when you need to perform additional scanning for only the teeth after you scanned the case using the "Teeth + Gingiva" option.